

Pupil Workbook

Level 6 Week 4

Name: _____



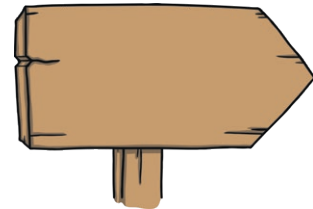
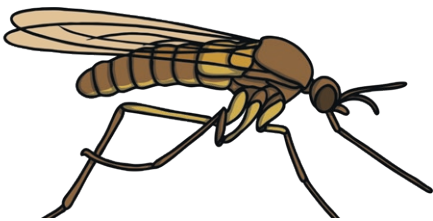
1. Write the common exception words.

Which is the tricky part of the word? Why is that part tricky? Colour the tricky part in a different colour. Write the word two more times.

know

colour

2. Spell the words.



3. Answer the questions.

Read these silly questions and answer them by circling 'yes' or 'no'.

- | | | |
|---|-----|----|
| Can you gnash your teeth like a horse? | yes | no |
| Would you design a new school badge? | yes | no |
| Could a gnome sit on the moon? | yes | no |

1. Read and match.

Read the clues and draw a line to match the clue to the correct picture.

Clue 1

I live in a nicely designed burrow. I gnaw on roots and wood to keep my teeth from being too sharp. I have two ears and a fluffy tail.

What am I?

Clue 2

I am campaigning. My sign says to vote for me. I designed it myself.

Who am I?

Clue 3

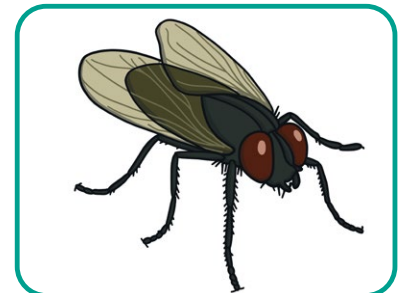
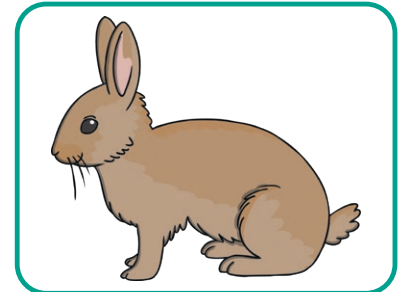
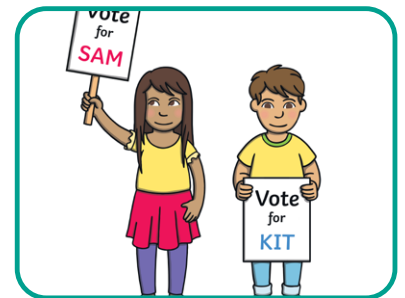
I am outside and full of water. You might see a plastic gnome next to me or ducks floating on me. I can come in different shapes and designs.

What am I?

Clue 4

I am a flying insect like a gnat. You may see me flying in the air or crawling on a leaf or a gnarled bit of wood. My stripy design tells you I can sting.

What am I?



Focus: **gn** saying /n/

The /n/ Sound Family	
n	gn

1. Read the story.

Highlight all of the words that contain the /n/ phoneme.

n gn

One day, the nice gnomes had a contest to design a new sign for Gnome Wood. All of the gnomes designed new signs and began to paint them but after a little bit, the gnomes started to have problems. Gnats got stuck to the wet paint on nine of the signs. Some of the other gnomes had painted on gnarled wood but it was too bumpy so they could not read it. Then, some rabbits gnashed their long teeth on the posts of the last few signs to make them shorter. The rabbits were happy but it made the signs fall over! Finally, the gnomes thought that the best way to make a sign was to make it together, as a team. After a long time, the new sign was ready and they hung it up in the trees.

2. Sort the words.

Sort the words from the story into the table.

n	gn

Focus: **gn** saying /n/

The /n/ Sound Family	
n	gn

1. Write the common exception words.

Which is the tricky part of the word?

know

colour

2. Write a word that uses each grapheme.

Fill in the table below. Can you think of a word for each box? Check your spellings with a dictionary.

Use n when...	Use gn when...
<ul style="list-style-type: none"> it is at the beginning, middle or end of a word. 	<ul style="list-style-type: none"> it is at the beginning, middle or end of certain words. We need to learn which words use this spelling pattern as it is not very common.

n

gn

1. Write the sentence your teacher says.

Think carefully about which graphemes to use to spell the words.

How confident do you feel?

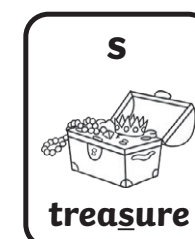
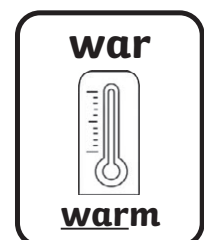
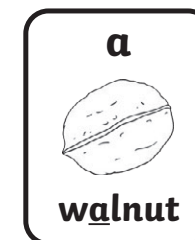
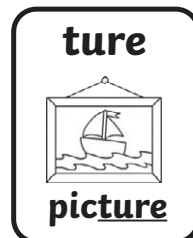
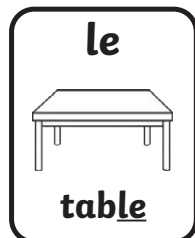
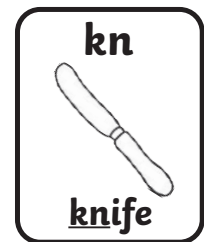
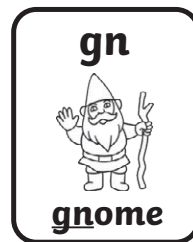
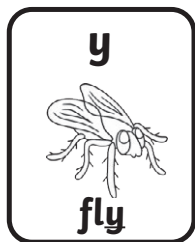


n

gn

1. Write your own silly sentence.

Use words containing the **gn** grapheme.



Level 6 Week 4 Additional Activities

Focus: **gn** saying /n/

The /n/ Sound Family

n

gn

1. Practise spelling the focus words.

Look and Say	Look, Say and Write	Cover and Write	Check
gnome			
sign			
gnaw			
gnat			
design			
gnarl			
gnash			
campaign			
know			
colour			